



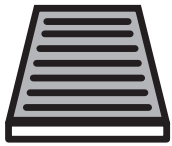
PROTECT

combined with active carbon



698697

FH802



CA

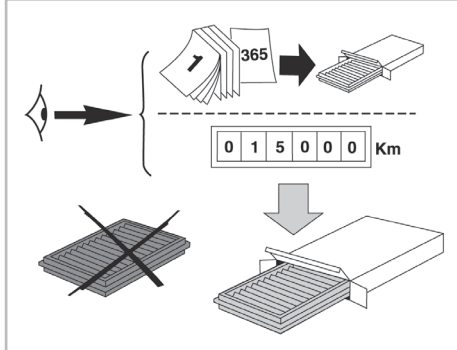
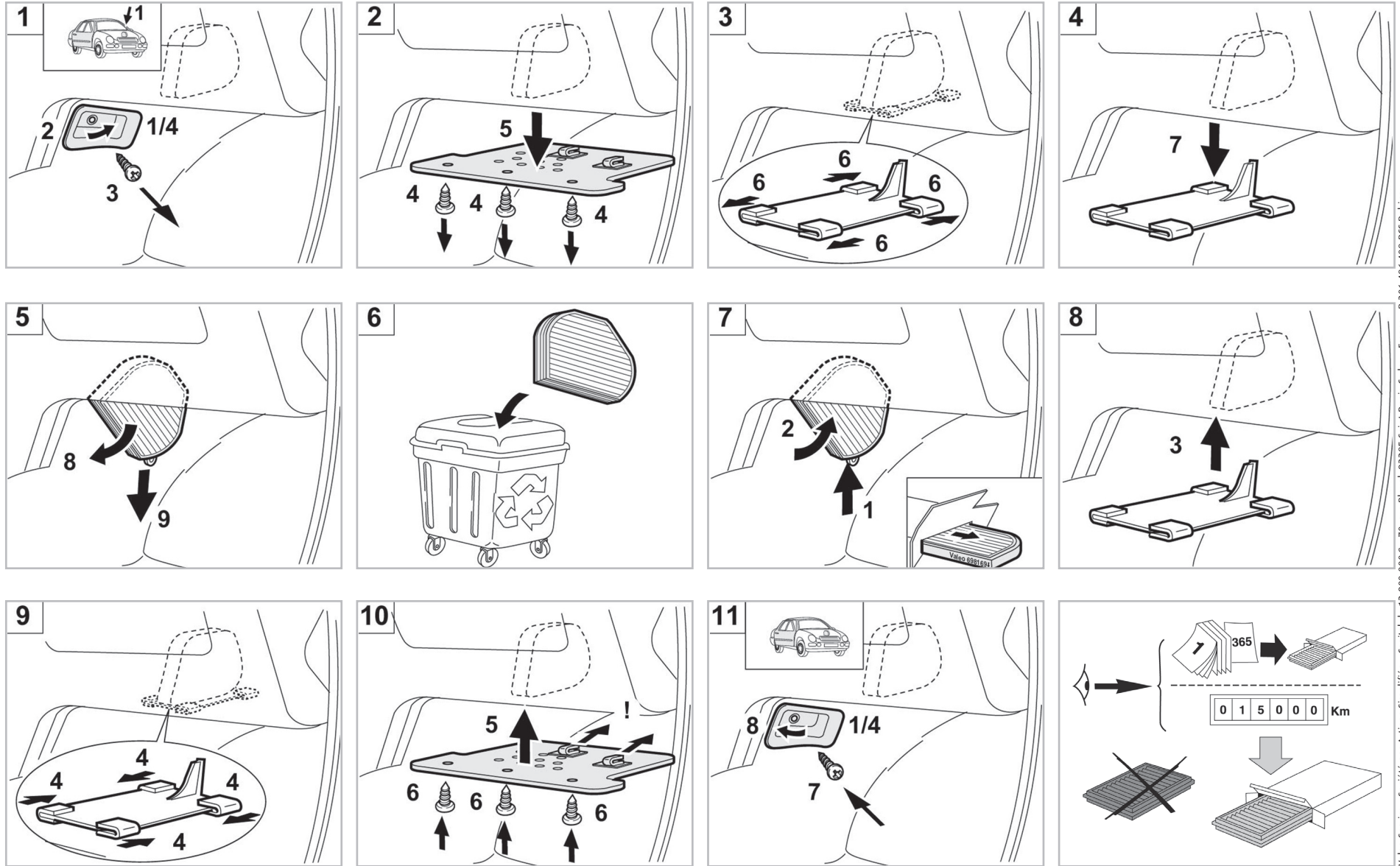
WANT TO KNOW MORE?



www.valeo-techassist.com

FOR
MERCEDES

C CLASS (202) A/C+/- (03/93 > 02/01) / CLK (208) A/C+/- (06/97 > 08/02) / E CLASS (210) A/C+/- (04/95 > 03/02) / SLK (R170) A/C+/- (08/96 > 12/03)



Valeo Service - Société par Actions simplifiée - Capital de 12 900 000€ - 70, rue Playel, 93285 Saint-Denis Cedex - France - B 306 486 408 RCS Bobigny